

# Dry Lining Accessories

## AH185 195mm Bracket (GL2)



For fixing stud to masonry - maximum stand off 75mm.

|                |                       |
|----------------|-----------------------|
| Material       | Galvanised Mild Steel |
| Packed         | 100 per box           |
| Weight per 100 | 3.60kg                |

## AH185E 195mm Bracket (GL2) Easybend



For fixing stud to masonry - maximum stand off 75mm.

|                |                       |
|----------------|-----------------------|
| Material       | Galvanised Mild Steel |
| Packed         | 100 per box           |
| Weight per 100 | 3.60kg                |

## AH186 295mm Bracket (GL9)



For fixing stud to masonry - maximum stand off 125mm.

|                |                       |
|----------------|-----------------------|
| Material       | Galvanised Mild Steel |
| Packed         | 100 per box           |
| Weight per 100 | 5.80kg                |

## AH186E 295mm Bracket (GL9) Easybend



For fixing stud to masonry - maximum stand off 125mm.

|                |                       |
|----------------|-----------------------|
| Material       | Galvanised Mild Steel |
| Packed         | 100 per box           |
| Weight per 100 | 5.80kg                |

## AH175 395mm Bracket (GL12)



For fixing stud to masonry - maximum stand off 175mm.

|                |                       |
|----------------|-----------------------|
| Material       | Galvanised Mild Steel |
| Packed         | 100 per box           |
| Weight per 100 | 7.30kg                |

## AH198 Framing Clip (GL10)



Encasement Clip (Steel Framing Clip) for cladding structural steel sections.

|                |                                     |
|----------------|-------------------------------------|
| Material       | Spring Steel Black Phosphate Finish |
| Packed         | 100 per box                         |
| Weight per 100 | 3.60kg                              |

## AH180 Steel Partitioning Bracket



90° Bracket for Partition / Frame.

|                |                             |
|----------------|-----------------------------|
| Material       | Galvanised Mild Steel       |
| Packed         | 100 per box<br>1000 per bag |
| Weight per 100 | 1.76kg                      |

## AH181 Aluminium Partitioning Bracket



90° Bracket for Partition / Frame.

|                |                             |
|----------------|-----------------------------|
| Material       | Aluminium                   |
| Packed         | 100 per box<br>1000 per bag |
| Weight per 100 | 0.97kg                      |



Arthur Hough & Sons Ltd.

Hilton Cross Business Park, Cannock Road, Featherstone, Wolverhampton, WV10 7OZ

Tel: +44 (0) 1902 867718 Fax: +44 (0) 1902 867719

Email: sales@ahough.com Website: www.ahough.com

# Dry Lining Accessories

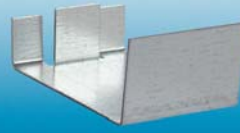
## AH116 Staggered Stud Clip (SC1)



Clip to provide 10mm stagger. Used in staggered acoustic partition system for positioning and securing studs.

|                |                       |
|----------------|-----------------------|
| Material       | Galvanised Mild Steel |
| Packed         | 100 per box           |
| Weight per 100 | 2.50kg                |

## AH117 Staggered Stud Clip (SC2)



Clip to provide 55mm stagger. Used in staggered acoustic partition system for positioning and securing studs.

|                |                       |
|----------------|-----------------------|
| Material       | Galvanised Mild Steel |
| Packed         | 100 per box           |
| Weight per 100 | 2.50kg                |

## AH122 Shoe & Pan



Partition Mounting.

|                |                       |
|----------------|-----------------------|
| Material       | Galvanised Mild Steel |
| Packed         | 100 per box           |
| Weight per 100 | 0.70kg                |

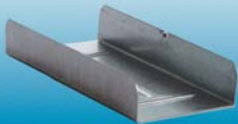
## AH199 Furring to Channel Clip (MF9)



Clip for connecting channel to furring section.

|                |                              |
|----------------|------------------------------|
| Material       | Galvanised Spring Steel Wire |
| Packed         | 200 per box                  |
| Weight per 100 | 1.05kg                       |

## AH118 Channel Connector (GL3)



Channel Connector.

|                |                       |
|----------------|-----------------------|
| Material       | Galvanised Mild Steel |
| Packed         | 50 per box            |
| Weight per 100 | 3.20kg                |

## AH119 Timber Connector (GL5)



Channel to timber connector - maximum drop 35mm.

|                |                       |
|----------------|-----------------------|
| Material       | Galvanised Mild Steel |
| Packed         | 200 per box           |
| Weight per 100 | 1.05kg                |

## AH120 Timber Connector (GL6)



Channel to timber connector - maximum drop 120mm.

|                |                       |
|----------------|-----------------------|
| Material       | Galvanised Mild Steel |
| Packed         | 100 per box           |
| Weight per 100 | 3.10kg                |

For further information on all **Dry Lining Accessories** available please contact our sales team:

Tel: +44 (0) 1902 867718

Fax: +44 (0) 1902 867719

email: [sales@ahough.com](mailto:sales@ahough.com)



Arthur Hough & Sons Ltd.

Hilton Cross Business Park, Cannock Road, Featherstone, Wolverhampton, WV10 7QZ

Tel: +44 (0) 1902 867718 Fax: +44 (0) 1902 867719

Email: [sales@ahough.com](mailto:sales@ahough.com) Website: [www.ahough.com](http://www.ahough.com)